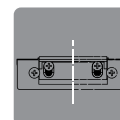
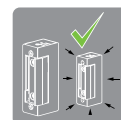
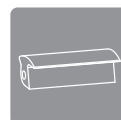
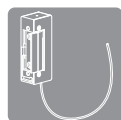


# Series 50

## Reinforced electric lock

The 50 Series is characterized by its robustness, making it an ideal solution for high traffic or heavy doors. The latch steel guarantees fracture resistance of up to 800 kg. Symmetrical and reversible, the Series 50 locks are ideal for security installations.

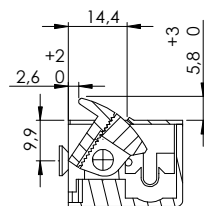
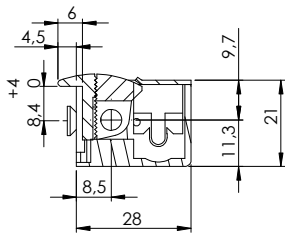
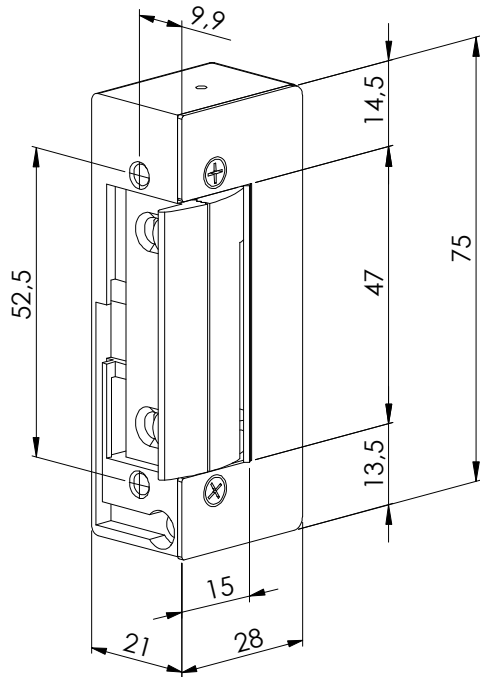
Available in adjustable and monoblock version, installation is facilitated by a long cable outlet. In the switch version the microswitch is located inside the monoblock; so that the lock does not lose symmetry.



- Fracture resistance 800kg
- Robust
- Possibility of internal microswitch
- Microswitch actuator in stainless steel
- Long wires output
- Ideal for heavy doors and high traffic
- Symmetrical
- Reversible
- Adjustable and monoblock version
- Reduced size

	8-12 V		24 V	12 VDC (412)		24 VDC (424)	12 VDC (512)	24 VDC (524)
Rated Resistance ( $\Omega$ )	8	17	58	30	45	132	60	230
AC Current Consumption (mA)	800 (8V) 1200 (12V)	370 (8V) 560 (12V)	330					
Stabilized DC Current Consumption (mA)	1000 (8V) 1500 (12V)	470 (8V) 700 (12V)		400 vdc cont. rated	260 vdc cont. rated	180 vdc cont. rated	200 vdc cont. rated	120 vdc cont. rated
Continuously Operating Voltage Range In VDC (V)			-	11-12	11-12	23-24	11-12	23-24
Max. Latch Preload AC (N)	300 (12V)	-	-	-	-	-	-	-

# Casing



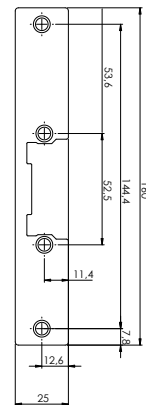
- Grey painted finish
- Stainless steel

# Technical Features

Height	75 mm
Width	21 mm
Depth	28 mm
Adjustable Jaw Range	4 mm
Suits Latches With Maximum Throw Of	6 mm
Endurance Cycles Test In-plant	500.000
Holding Force	7.800 N / 800 kg-f
Operating Temperature Range	-15 °C to +40 °C
Diode Or Varistor	Optional
Microswitch	Optional

# Recommended striking plate

S



NORMAL

STANDARD AUTOMATIC

INVISIBLE AUTOMATIC

TIMED AUTOMATIC

SLIDING AUTOMATIC

INVERTED

SWITCHED

UNBLOCKING

ADJUSTABLE \*

WORKING VOLTAGE

5001	✓								V AC
5007	✓								12V DC
5013					✓				12V DC
5029	✓						✓		V AC
5030	✓						✓		12V DC
5031					✓		✓		12V DC

\* By regulating screws in latch