

Introduction to the functions of the AD menu and the process of using it

PS: licences required to use AD functionality.

1、 Included features

- 1) Synchronize user information from AD domain server to ZKBio CVSecurity database personnel information
- 2) Synchronize group information from the AD domain server to ZKBio CVSecurity database permission group information
- 3) Synchronize user information from groups in the AD domain to the Add Person section in the ZKBio CVSecurity Permissions group
- 4) Set incremental sync and global sync timed task times to automatically perform the above tasks
- 5) The sync messages both contain incremental and global sync, as shown in the figure:

Incremental synchronization (minutes)

30

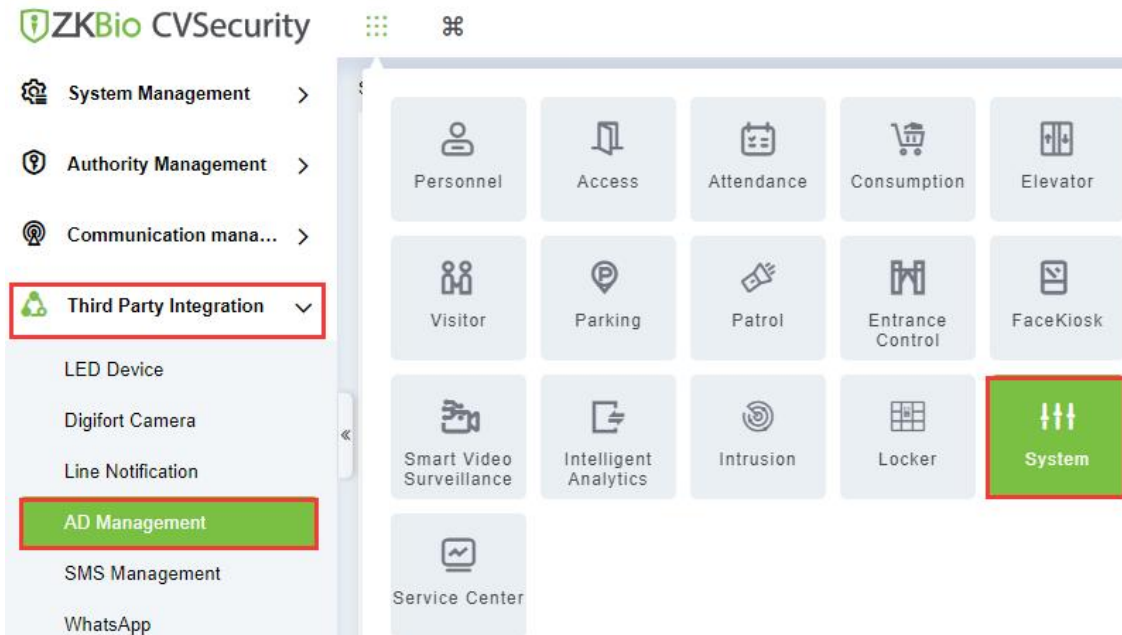
Import now

Global synchronization

Every 3 Day 0 O'clock

Import now

2、 Operation path



3、 AD Function of management

1) Synchronizing personnel information

① AD domain link module

server address: ldap://IP address of the AD domain service : port number (The default port number is 389)

E.g. ldap://10.8.51.115:389

Username:User login name specified in the AD domain group

E.g.test123@zkteco.com

Password:Password for logging in to the AD domain group

Domain node: ou in AD domain = group name, dc = domain name (before the ".") , dc=domain name (after the ".")

E.g. ou=person,dc=zkteco,dc=com (ps:The order of domain names cannot be changed)

Server address ldap:// ip address of the computer where the AD domain service resides: 389 (389 is the default port).

ldap://10.8.51.115:389

User name test123 is the user name of the AD domain service, zkteco.com is the AD domain name, and the two are connected with @.

test123@zkteco.com

Password

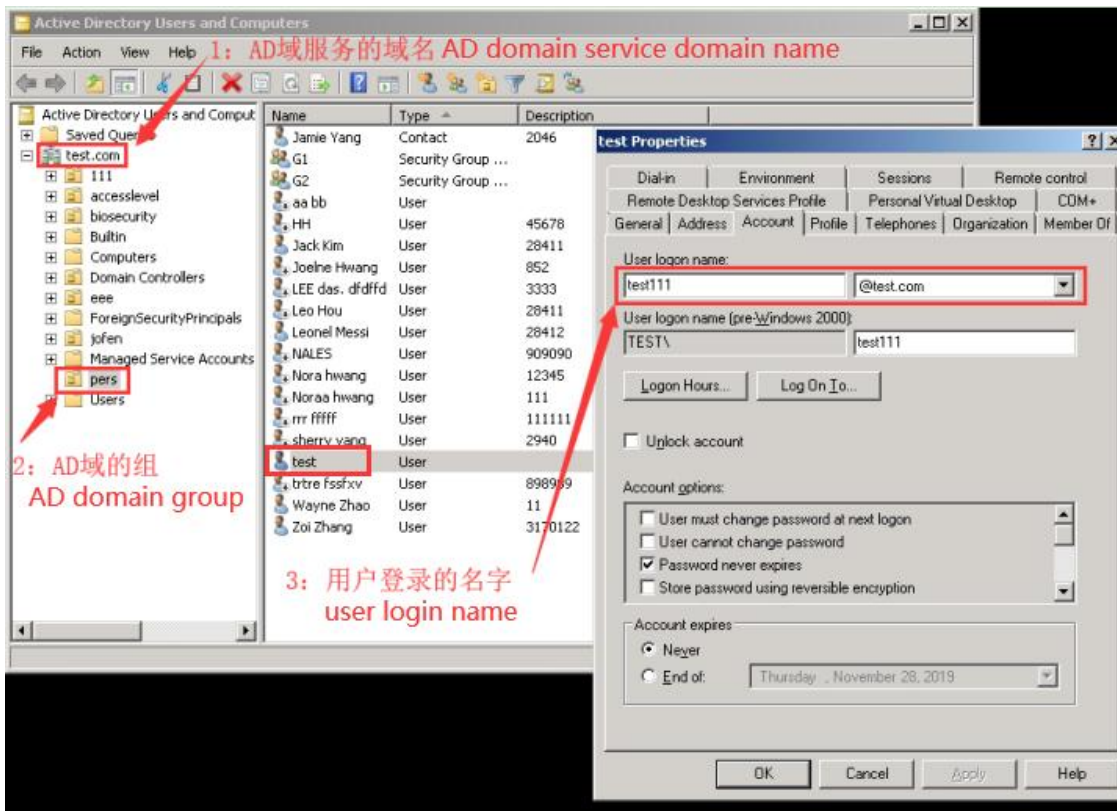
..... Password of the user.

Domain node ou indicates the AD domain service group. dc indicates the AD domain name zkteco.com, But write them separately.

ou=person,dc=zkteco,dc=com

Test connection After the configuration is complete, test it. If the test fails, check whether the two sides can ping each other.

PS: The following uses 1 ldap://192.168.213.196:389, Username : test111@test.com, Domain node : ou=pers,dc=test,dc=com as an example





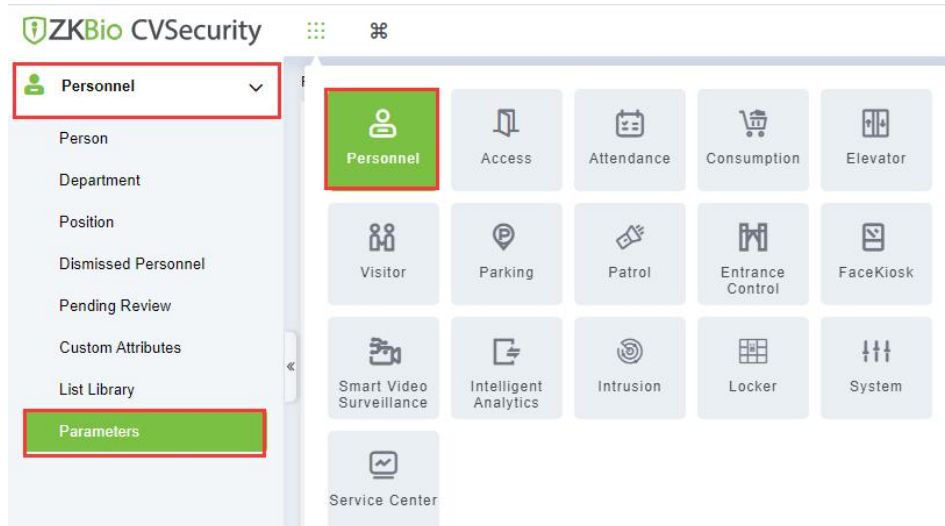
② Synchronization information matching module

Database Fields	Import AD fields
Personnel ID	Description
First Name	name
Last Name	Last name
Department Name	Department
Mobile Phone	Mobile
Email	Email
Card Number	Home Phone

Reset configuration

③ ZKBio CVSecurity software local database field, this field cannot be repeated.

PS: If the user ID in the AD domain database has characters, you need to set the support letters in ZKBio CVSecurity to yes and set the maximum length.



The Maximum Length:

10

Support Letters:

Yes No

- The member information field in the AD server domain.
- Select the corresponding field in the AD server domain, which can be repeated.
- Some new attributes can be added to the AD server domain. The new attributes are personnel-defined attributes, with a maximum of 5 new attributes.

PS: The value of the AD domain field corresponding to the card number cannot be repeated. This cannot be detected in ZKBio CVSecurity and has to be noted by the user when configuring the person information in the AD domain server on his own initiative.

- Reset configuration

4、 The modules of synchronization permission group information

Synchronization permission group 1

Synchronize members in permission group 2

Domain Node

⚠ Please perform the synchronization permission group first, otherwise the synchronization may fail.

Test connection

Synchronization permission group 1

Synchronize members in permission group

Domain Node

⚠ Please perform the synchronization permission group first, otherwise the synchronization may fail.

Test connection

Domain node: ou in AD domain = group name , dc = domain name (before the ".") , dc=domain name (after the ".")

● Synchronization Permission Group

1 is the path to synchronize the information of the permission group, which is filled in with the same rules as **the path to synchronize the information of the person**. During the synchronization process, if you encounter a permission group with the same name as the one that **already exists** within ZKBio CVSecurity, just skip it.

E.g. If a group G1,G2,G3 exists under the path of the synchronized permission group in the AD domain, a new permission group named G1,G2,G3 will be created in the ZKBio CVSecurity DB after the synchronization is completed.

In the second synchronization, if the group under the path is changed to G1,G4,G5, the permission group is changed to G1,G4,G5 after the synchronization has been completed and G2,G3 is deleted.

If the user actively creates the permission group L1 in ZKBio CVSecurity, L1 is not affected during this process, i.e. it will not be deleted.

2、 The module of synchronize members in permission group

- Synchronization permission group
- Synchronize members in permission group 2

Domain Node

 Please perform the synchronization permission group first, otherwise the synchronization may fail.

[Test connection](#)

PS: You must have synced the permission group before you can sync permissions by a person, otherwise you will not sync that person to the permission group.

A tick at **1** means that the person inside the permission group is synchronized with the same path as **the synchronized person** path (not the synchronized permission group path). This process is skipped when the group of the person in the AD domain does not exist in ZKBio CVSecurity. No new permission groups will be added.

E.g. By synchronizing the person information path, the person AD domain is synchronized with data U1, U2, U3, etc. After synchronization is complete, the corresponding person information are P1,P2,P3 etc.

By synchronizing the permission group path, the permission groups G1,G2,G3 are synchronized and when synchronization is complete, the corresponding permission group information L1,L2,L3 has the same name, i.e. L1 name G1, L2 name G2, L3 name G3.

When synchronizing people in a permission group, the system will query the AD domain server for the group to which the user of the synchronized person belongs.

E.g.If U1 belongs to G1 G2, then P1 will be added to L1,L2 automatically.

If U2 belongs to G3 G5, P2 is automatically added to G3. **(If a permission group named G5 exists in ZKBio CVSecurity at this time, P2 will also be added to G5; if not, this step will be skipped and no new permission group named G5 will be created in ZKBio CVSecurity)**

● Timing synchronization module

Incremental synchronization (minutes)

30

Import now

Global synchronization

Every 3 Day 0 O'clock

Import now

- ① Incremental sync, the default time is the whole point with the whole point 30 minutes when the incremental synchronization. Check to modify the default incremental synchronization time.
- ② Global sync, the default time is from 0:00 every 3 days starting from the 1st. Check to modify the default incremental sync time.
- ③ Incremental (global) sync immediately.