

# 4 BASICS for LPR Settings in Camera webserver



LPR Car-ID



# LPR Solution

## Basic Configurations

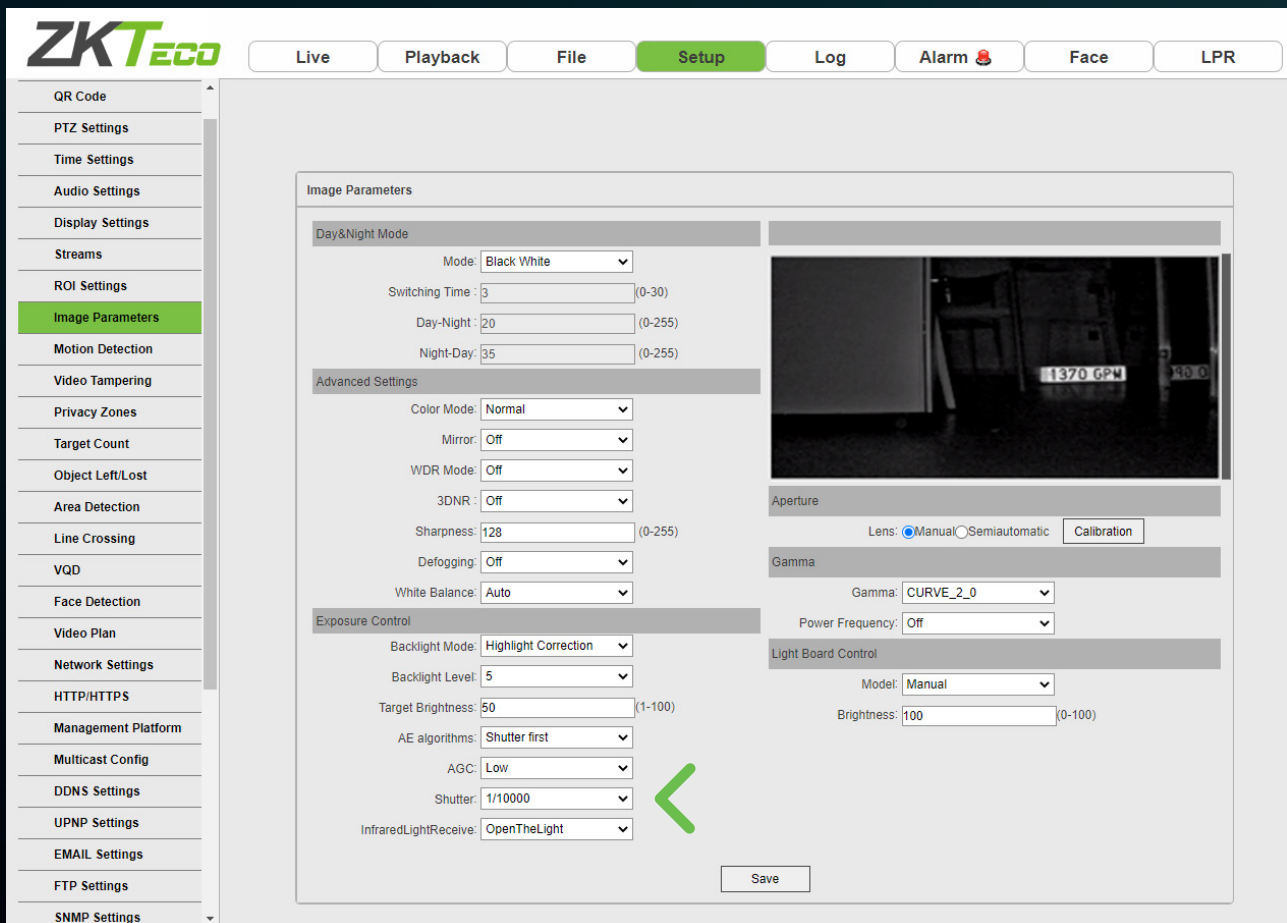
Controlling all aspects of vehicle access has become as important as high-security visitor identification. At ZKTeco we've developed a high-performance camera with an embedded License Plate Recognition application. Follow the LPR setup tips we show you in this guide for the best results and efficiency.

**SHUTTER** | **RESOLUTION** | **LENS** | **OSD**



# Image Parameters

## SHUTTER



## Shutter

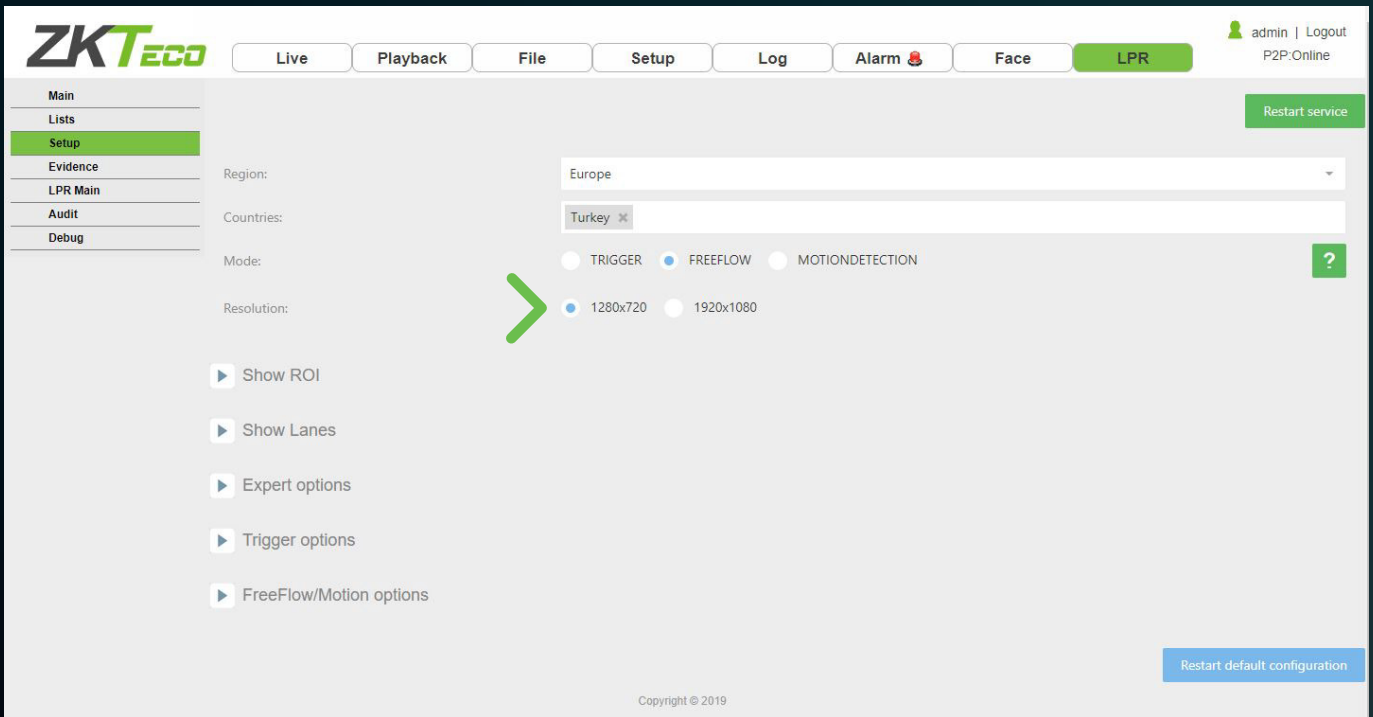
For a working distance of 3 or 4 meters shutter must be **1/10.000**

If the number plate is over exposed (too bright), lower the shutter to **1/100.000**

If the number plate is too dark rise the shutter to **1/5.000** and so on

# Image Parameters

## RESOLUTION



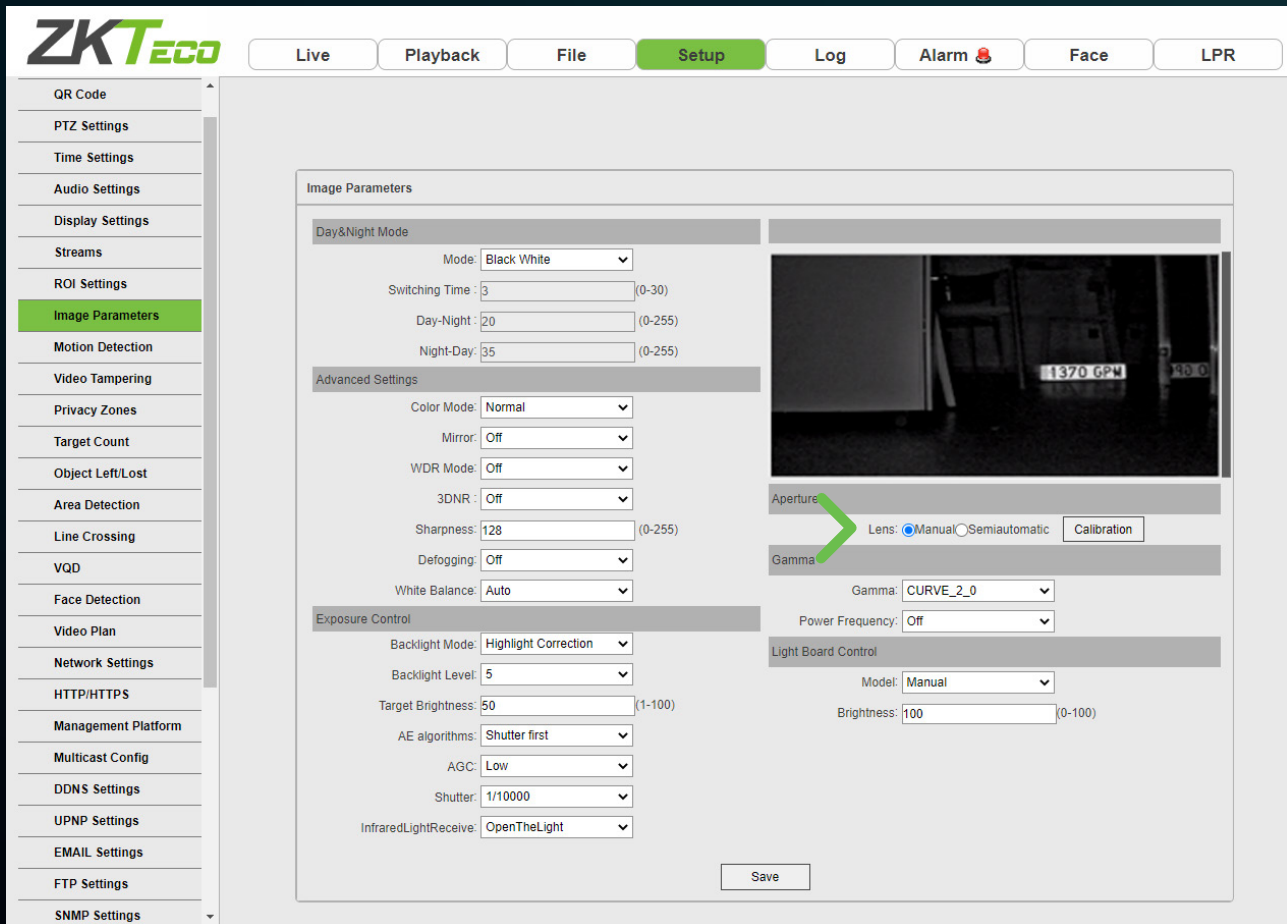
## Resolution

Always use **720p** resolution as standard (1280x720)  
Only when **2 lanes** are needed use **1080p** (1920x1080)



# Live View

## LENS

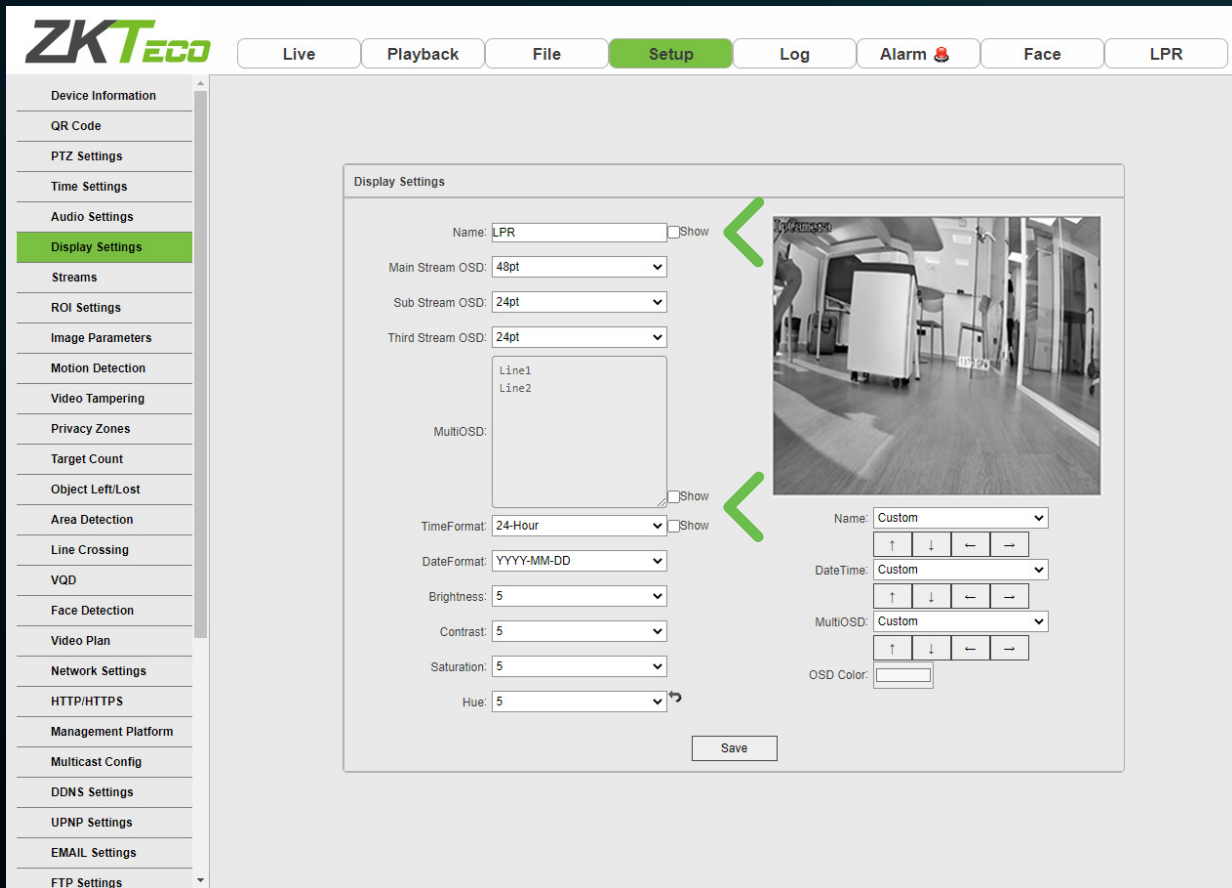


## ZOOM and Focus

Focus must be set as **MANUAL** in Image Parameters.  
 Zoom can be configured in the **LIVE** page



# Display Settings OSD



## OSD and ROI

If possible, remove text over image.

If not, setup a ROI avoiding this text in the **ROI Settings** page



**THANK YOU!**

**SHARE YOUR QUESTIONS  
& SUGGESTIONS IN  
COMMENTS**

