



# VF380

## Multi-function Face Identification Terminal

VF380 is a facial recognition terminal for time & attendance and access control which can connect with 3rd party electric lock, door sensor and exit button, etc. With the latest facial recognition algorithm and cutting-edge technology. It can save 3,000 face templates without dividing into groups. The product is able to communicate via WiFi (optional), Ethernet, USB (host and client), so to ensure a smooth connection and data transfer. All the settings can be easily done on a 2.8-inch capacitive touch screen. It has been elaborately designed and finely processed to match your office perfectly.

---

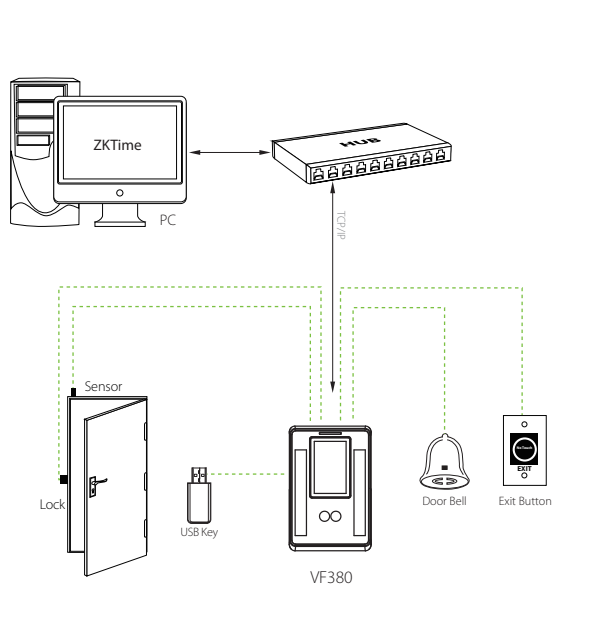
### Feature

- Elegant ergonomic design
- WiFi (optional), Ethernet and USB (client/host) communication
- Professional ZKTeco facial recognition algorithm
- 3,000 face template capacity
- 2.8-inch capacitive touch screen
- Optional for Mifare card module
- Infra-red optical system enables user-identifications in a wide range of environmental lighting

# Specifications

Display	2.8-inch capacitive touch screen
Face Capacity	3,000 (1:N)
ID Card Capacity	50,000/100,000
Logs Capacity	1,000,000
Communication	Ethernet , USB (host), Wi-Fi (optional)
Standard Functions	ID card, Automatic Status Switch, Self-Service Query, Work Code, T9 Input, 9 Digit User ID, DST, Scheduled-bell and Short Message, 3rd party electric lock, door sensor, and exit button, alarm
Optional Function	Mifare Card
Power Supply	12V/1.5A
Verification Speed	≤1S
Operating Temperature	0-45 °C
Operating Humidity	20%-80%
Dimensions	104.7 × 160 × 36 mm (L × H × D)

## Configuration



## What's in the Box

