

Installation Guide

WDMS

Date: November 2020

Doc Version: 2.0

Software Version: 8.0.3

English

Thank you for choosing our product. Please read the instructions carefully before operation. Follow these instructions to ensure that the product is functioning properly. The images shown in this manual are for illustrative purposes only.



For further details, please visit our Company's website
www.zkteco.com.

Copyright © 2020 ZKTECO CO., LTD. All rights reserved.

Without the prior written consent of ZKTeco, no portion of this manual can be copied or forwarded in any way or form. All parts of this manual belong to ZKTeco and its subsidiaries (hereinafter the "Company" or "ZKTeco").

Trademark

ZKTeco is a registered trademark of ZKTeco. Other trademarks involved in this manual are owned by their respective owners.

Disclaimer

This manual contains information on the operation and maintenance of the ZKTeco equipment. The copyright in all the documents, drawings, and more in relation to the ZKTeco supplied equipment vests in and is the property of ZKTeco. The contents hereof should not be used or shared by the receiver with any third party without express written permission of ZKTeco.

The contents of this manual must be read as a whole before starting the operation and maintenance of the supplied equipment. If any of the content(s) of the manual seems unclear or incomplete, please contact ZKTeco before starting the operation and maintenance of the said equipment.

It is an essential pre-requisite for the satisfactory operation and maintenance that the operating and maintenance personnel are fully familiar with the design and that the said personnel have received thorough training in operating and maintaining the machine/unit/equipment. It is further essential for the safe operation of the machine/unit/equipment that personnel have read, understood, and followed the safety instructions contained in the manual.

In case of any conflict between terms and conditions of this manual and the contract specifications, drawings, instruction sheets or any other contract-related documents, the contract conditions/documents shall prevail. The contract specific conditions/documents shall apply in priority.

ZKTeco offers no warranty, guarantee or representation regarding the completeness of any information contained in this manual or any of the amendments made thereto. ZKTeco does not extend the warranty of any kind, including, without limitation, any warranty of design, merchantability, or fitness for a particular purpose.

ZKTeco does not assume responsibility for any errors or omissions in the information or documents which are referenced by or linked to this manual. The entire risk as to the results and performance obtained from using the information is assumed by the user.

ZKTeco in no event shall be liable to the user or any third party for any incidental, consequential, indirect, special, or exemplary damages, including, without limitation, loss of business, loss of profits, business interruption, loss of business information or any pecuniary loss, arising out of, in connection with, or relating to the use of the information contained in or referenced by this manual, even if ZKTeco has been advised of the possibility of such damages.

This manual and the information contained therein may include technical, other inaccuracies or typographical errors. ZKTeco periodically changes the information herein which will be incorporated into new additions/amendments to the manual. ZKTeco reserves the right to add, delete, amend, or modify the information contained in the manual from time to time in the form of circulars, letters, notes, etc. for better operation and safety of the machine/unit/equipment. The said additions or amendments are meant for improvement /better operations of the machine/unit/equipment and such amendments shall not give any right to claim any compensation or damages under any circumstances.

ZKTeco shall in no way be responsible (i) in case the machine/unit/equipment malfunctions due to any non-compliance of the instructions contained in this manual (ii) in case of operation of the machine/unit/equipment beyond the rate limits (iii) in case of operation of the machine and equipment in conditions different from the prescribed conditions of the manual.

The product will be updated from time to time without prior notice. The latest operation procedures and relevant documents are available on <http://www.zkteco.com>

If there is any issue related to the product, please contact us.

ZKTeco Headquarters

Address ZKTeco Industrial Park, No. 32, Industrial Road,
Tangxia Town, Dongguan, China.

Phone +86 769 - 82109991

Fax +86 755 - 89602394

For business related queries, please write to us at: sales@zkteco.com.

To know more about our global branches, visit www.zkteco.com.

About the Company

ZKTeco is one of the world's largest manufacturer of RFID and Biometric (Fingerprint, Facial, Finger-vein) readers. Product offerings include Access Control readers and panels, Near & Far-range Facial Recognition Cameras, Elevator/floor access controllers, Turnstiles, License Plate Recognition (LPR) gate controllers and Consumer products including battery-operated fingerprint and face-reader Door Locks. Our security solutions are multi-lingual and localized in over 18 different languages. At the ZKTeco state-of-the-art 700,000 square foot ISO9001-certified manufacturing facility, we control manufacturing, product design, component assembly, and logistics/shipping, all under one roof.

The founders of ZKTeco have been determined for independent research and development of biometric verification procedures and the productization of biometric verification SDK, which was initially widely applied in PC security and identity authentication fields. With the continuous enhancement of the development and plenty of market applications, the team has gradually constructed an identity authentication ecosystem and smart security ecosystem, which are based on biometric verification techniques. With years of experience in the industrialization of biometric verifications, ZKTeco was officially established in 2007 and now has been one of the globally leading enterprises in the biometric verification industry owning various patents and being selected as the National High-tech Enterprise for 6 consecutive years. Its products are protected by intellectual property rights.

About the Manual

This manual introduces the installation procedure of WDMS software.

All figures displayed are for illustration purposes only. Figures in this manual may not be exactly consistent with the actual products.

Document Conventions

Conventions used in this manual are listed below:

GUI Conventions

For Software	
Convention	Description
Bold font	Used to identify software interface names e.g. OK , Confirm , Cancel
>	Multi-level menus are separated by these brackets. For example, File > Create > Folder.

Symbols






Convention	Description
	This implies about the notice or pays attention to, in the manual
	The general information which helps in performing the operations faster
	The information which is significant
	Care taken to avoid danger or mistakes
	The statement or event that warns of something or that serves as a cautionary example.

Table of Contents

1	OVERVIEW	6
2	INSTALLATION SETUP	6
2.1	SYSTEM REQUIREMENTS.....	6
3	INSTALLATION STEPS	7
4	SQL SERVER CONFIGURATION WITH WDMS	13
5	WDMS CONFIGURATION	14
5.1	SERVER PORT CONFIGURATION	14
5.2	DATABASE CONFIGURATION.....	15
5.3	LICENSE INFORMATION	17

1 Overview

WDMS is an advanced middleware which stands for Web-based Data Master System. As a middleware, WDMS allows the user to deploy on kinds of servers and databases for devices and transactions management. It provides a stable connection to ZKTeco standalone push communication devices through Ethernet/Wi-Fi/GPRS/3G. Administrators can access WDMS anywhere through the browser or a third-party software by API to handle thousands of devices, thousands of employees, and their transactions. At the same time, its new MTD module will ensure that every employee entering the work area is well.

2 Installation Setup

2.1 System Requirements

Feature	Specification
Operating System	Windows 7/ 8/ 8.1/ 10 (64-bits) Windows Server 2008/ 2008R2/ 2012/ 2012R2/ 2016/ 2019 (64-bits)
Memory	4GB or above
CPU	Dual-Core Processor with a speed of 2.4GHz or above
Hard Disk	100GB or above (We recommend using NTFS hard disk partition as the software installation directory)

Database

- PostgreSQL 10 (default)
- MS SQL 2005/2008/2012/2014/2016/2017
- MySQL 5.0/ 5.6/ 5.7
- Oracle 10g/11g/12c/19c

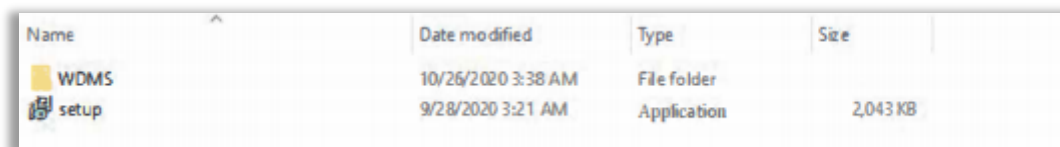
Browsers

- Chrome 33+
- Internet Explorer11+
- Firefox 27+

3 Installation Steps

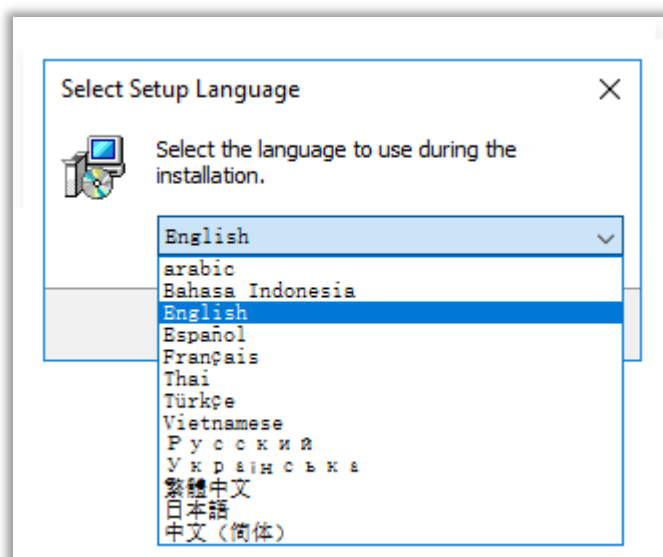
Perform the following steps to install the WDMS software.

1. Right-click the **setup.exe** file and select **Run as Administrator**.



Name	Date modified	Type	Size
WDMS	10/26/2020 3:38 AM	File folder	
setup	9/28/2020 3:21 AM	Application	2,043 KB

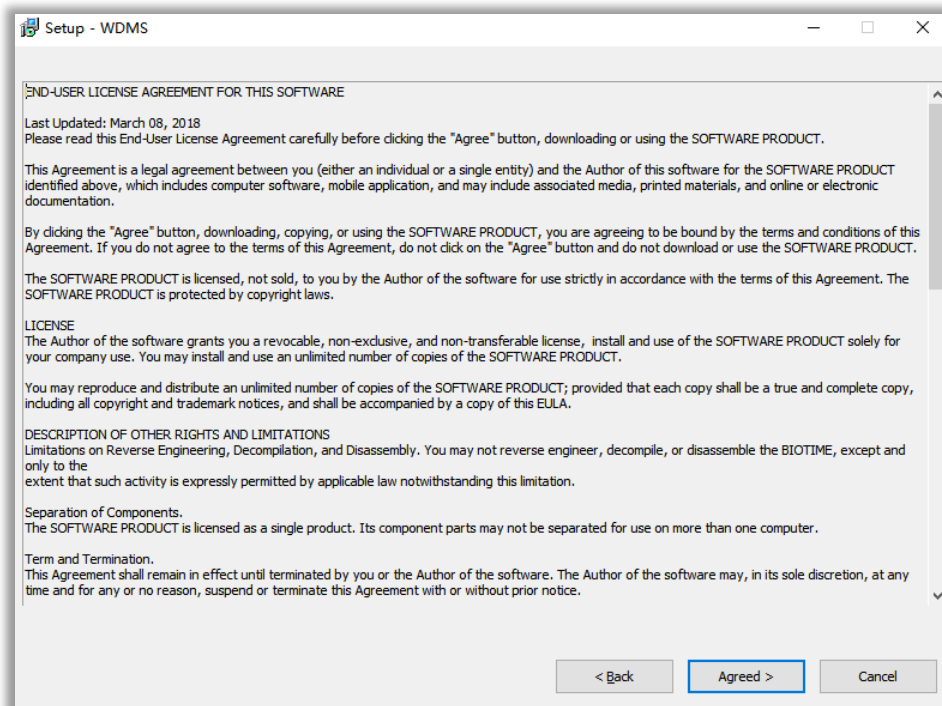
2. Select the setup language from the drop-down list.



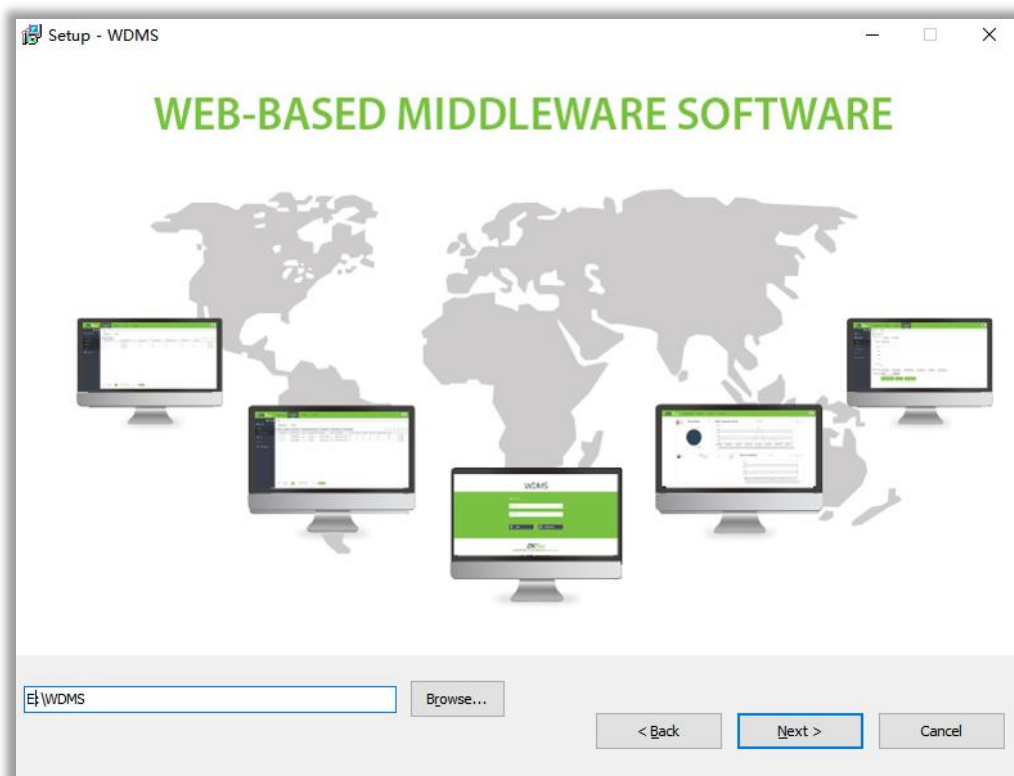
- Click **Start** to start the installation process.



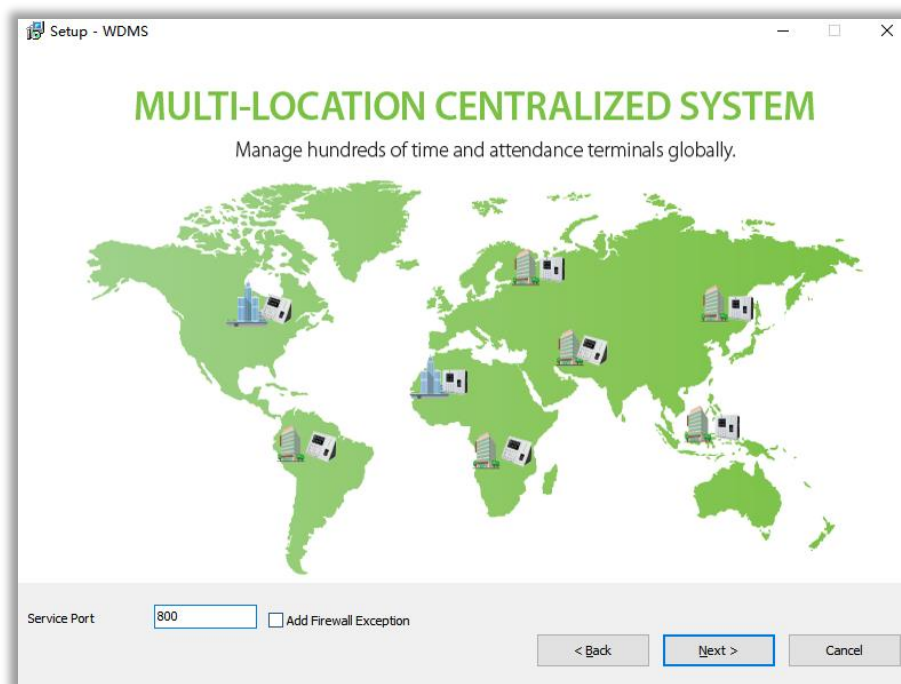
- Carefully read the License Agreement and click **Agree** if you agree to the license terms and conditions and **Back** if not.



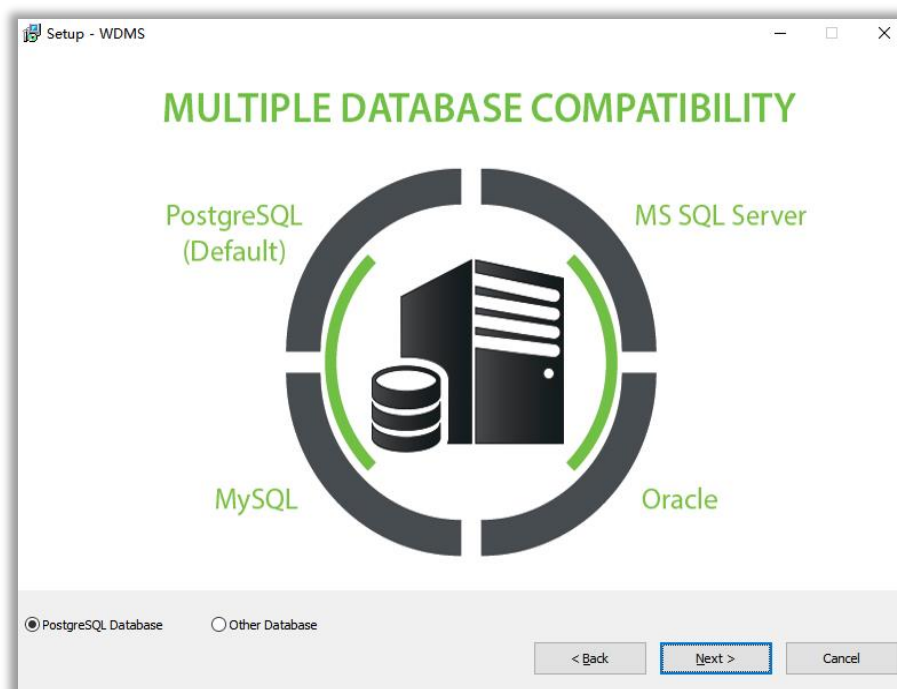
5. Select the installation path to install the software and click **Next**.



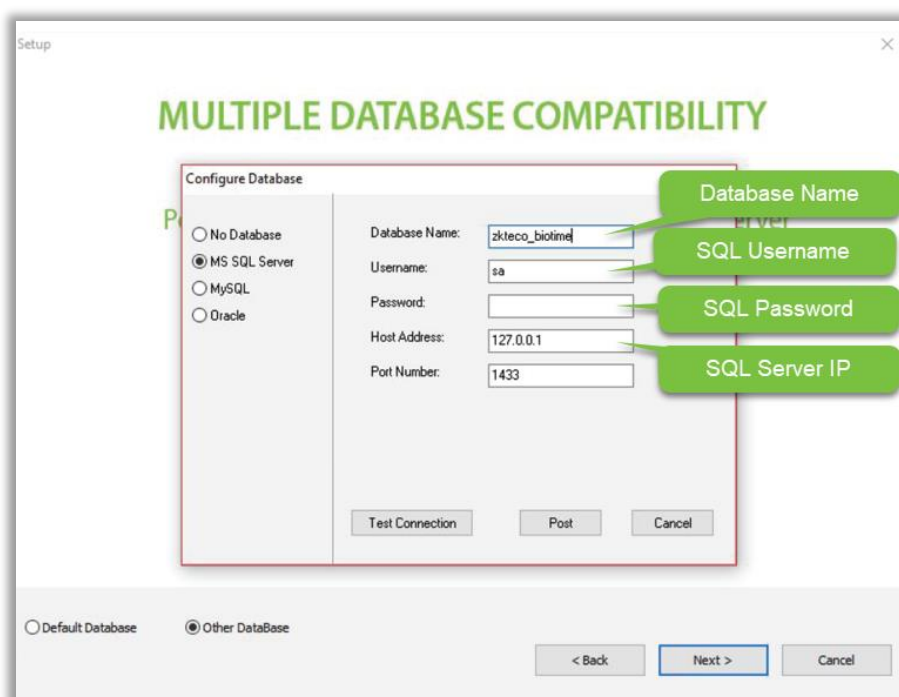
6. Set the Port number and select the **Add Firewall Exception** checkbox.



7. Choose **Default Database** to install the software in the default database **PostgreSQL**. The user can also configure the database after installation in the BioTime Platform Service Console.



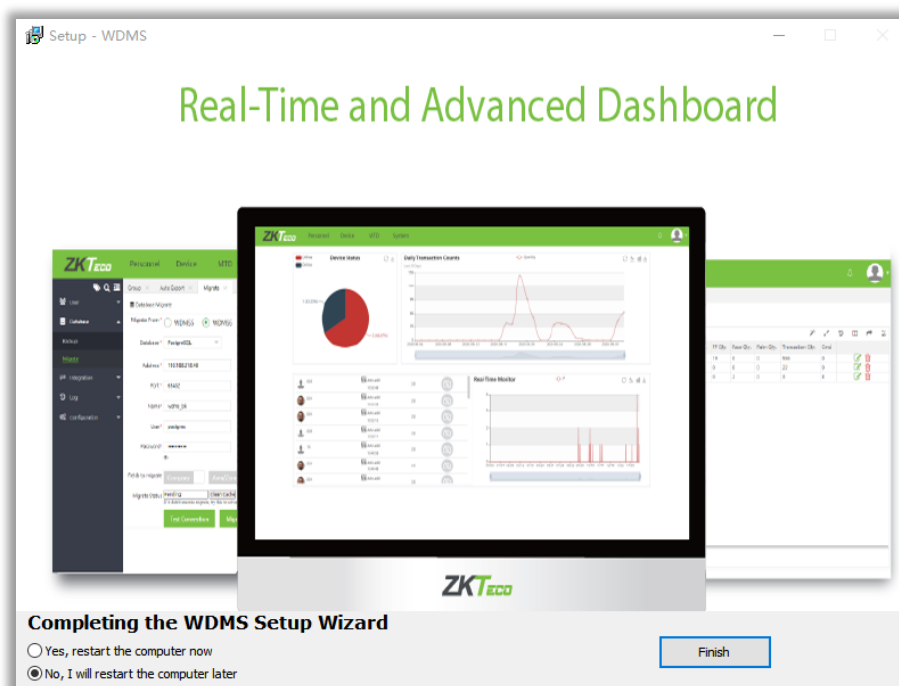
8. If the user chooses to configure the database in the installation process, click **Other Database** and select the type of database. Fill in the details accordingly.



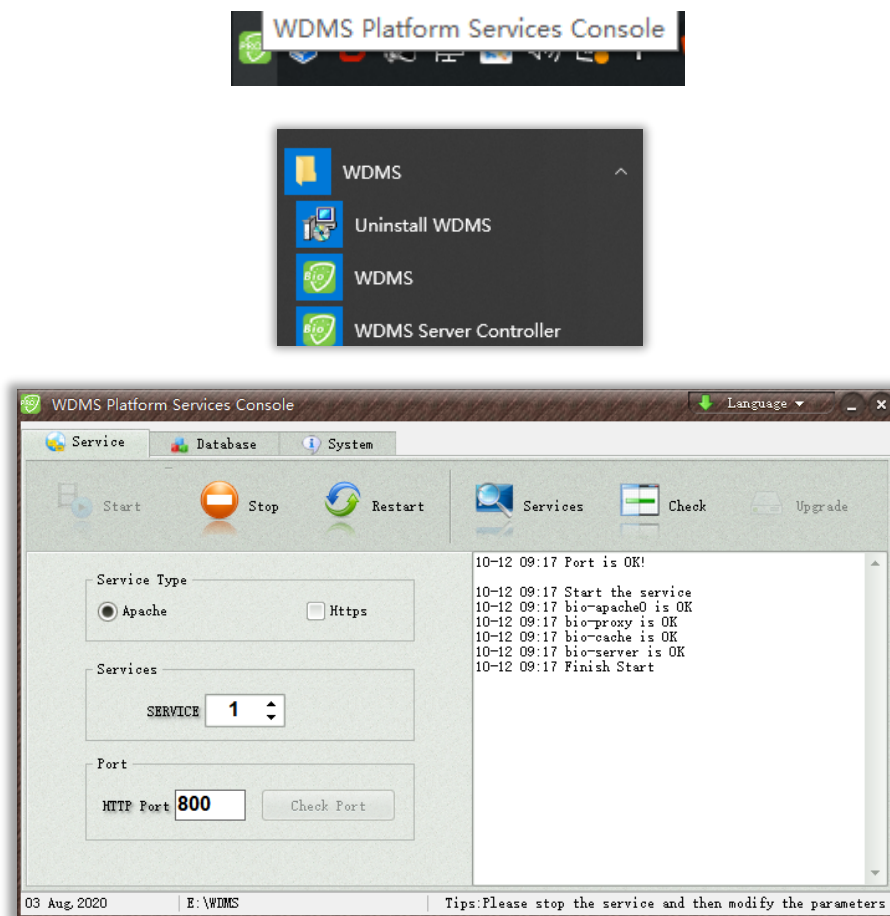
9. Click **Install**.



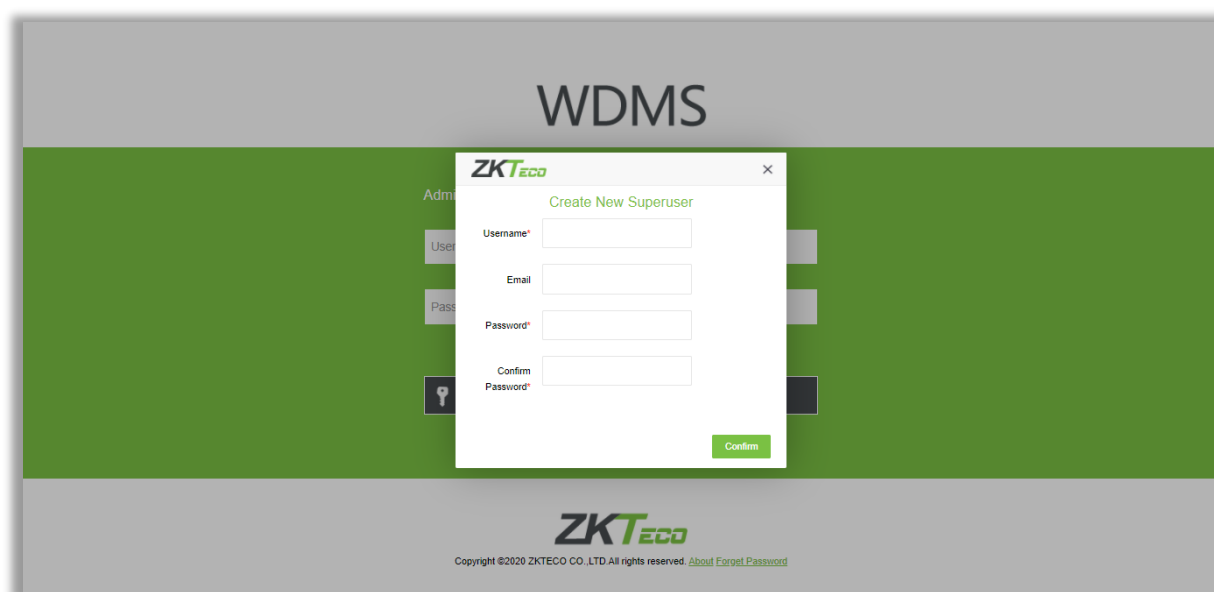
10. Complete the installation process by restarting the system.



11. After installation, run the **WDMS Platform Service Console** in the taskbar or in the **Start** menu. Then click **Start** under the **Service** tab.



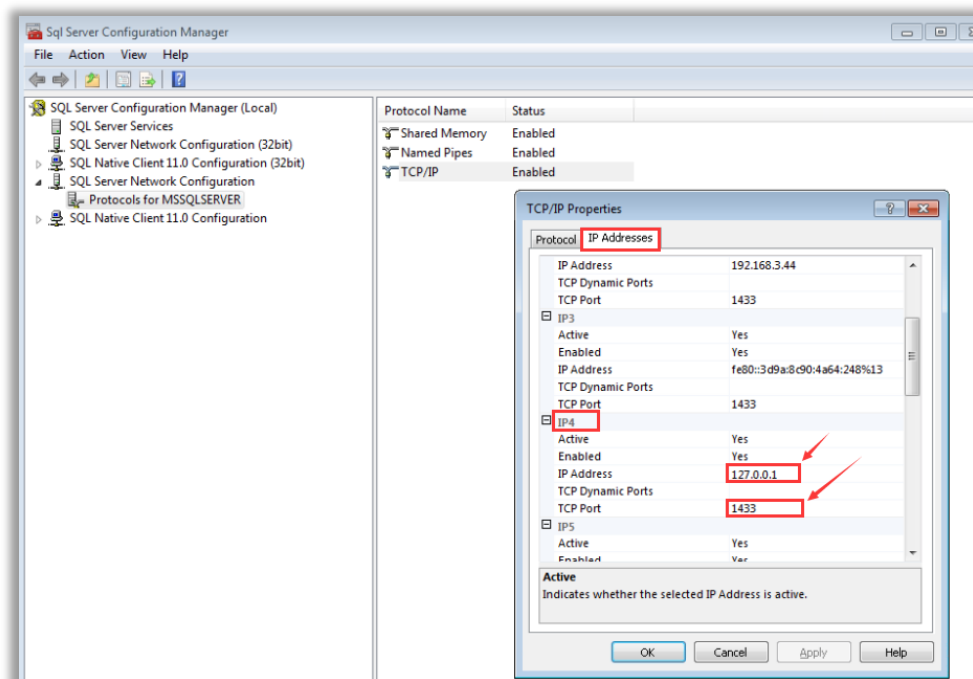
12. Double-click the **WDMS Home Page** shortcut icon on the desktop. The system login interface will pop up as shown below:



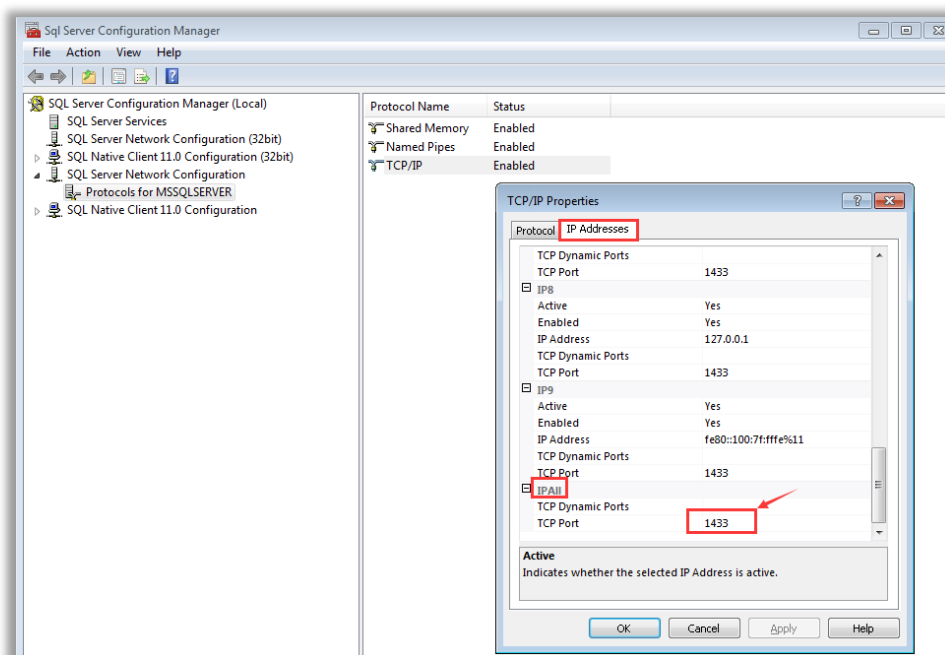
13. Initially, the user needs to create a Super System Administrator and log in to the software with the created Administrator account.

4 SQL Server Configuration with WDMS

- While installing the MS SQL Server, choose **Mixed Mode Authentication**.
- Click **Start > SQL Server Configuration Manager > Protocols for MS SQL Server**.
- Right-click **TCP/IP > Enable TCP/IP**.



- Then select **IP Address > IPAll**.
- In **IPAll** configuration, set the value of **TCP Dynamic Ports** as **1433**.



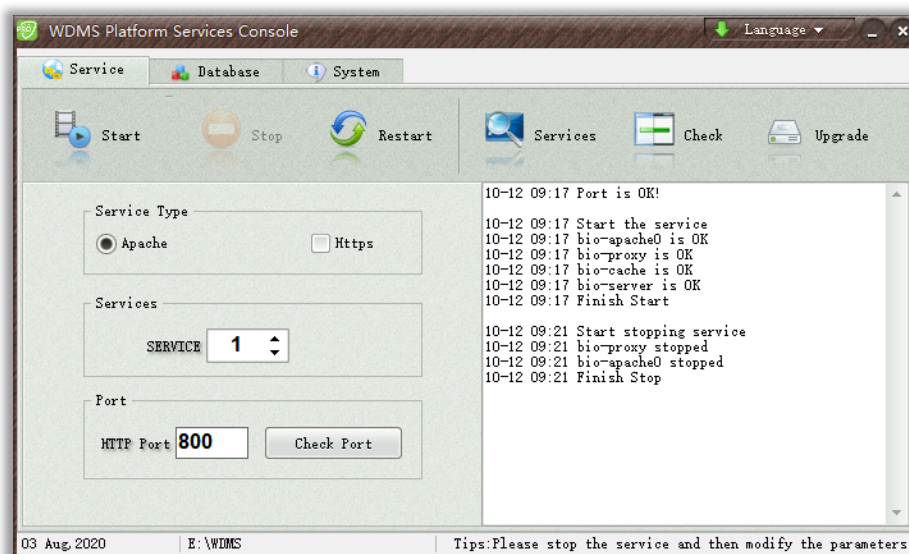
- Click **OK** and then restart the SQL services.

5 WDMS Configuration


Open the WDMS Platform Service Console to configure

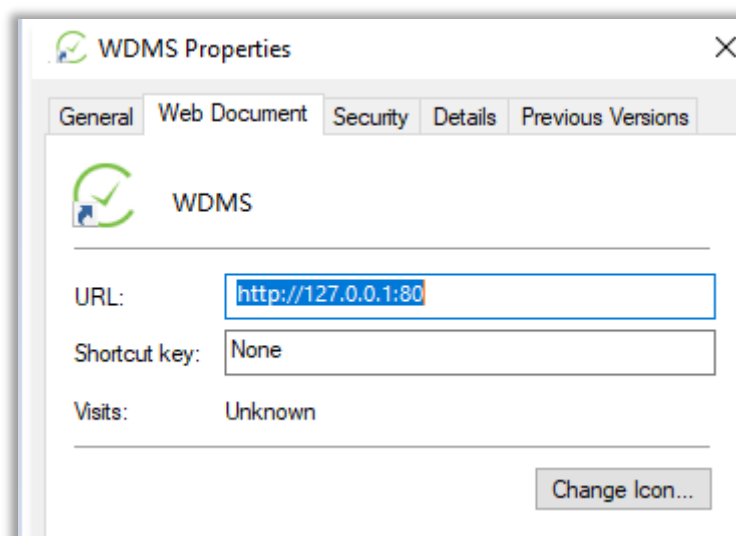
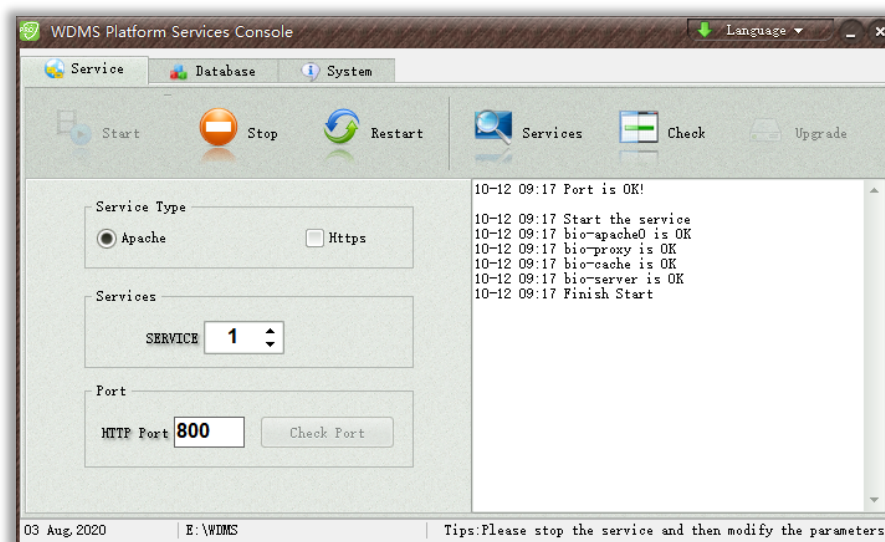
5.1 Server Port Configuration

In the **Service** tab, click **Stop** to stop the services and then enter the port number. Click **Check Port** to see if the port number is available. Then click **Start** to start the services again.



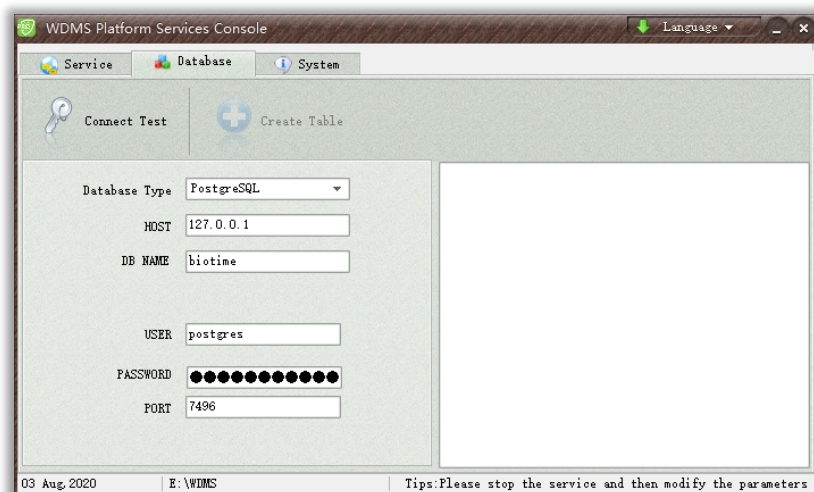
Note:

- **“Port Unavailable”** means that the port is occupied. Please set another port and retest.
- When the port number is modified, right-click the WDMS icon  on the desktop and open the **Properties** to change its URL.

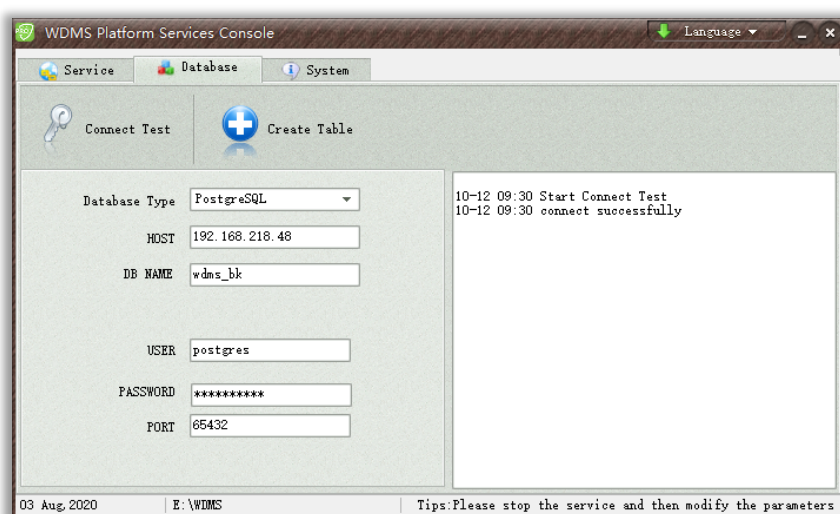
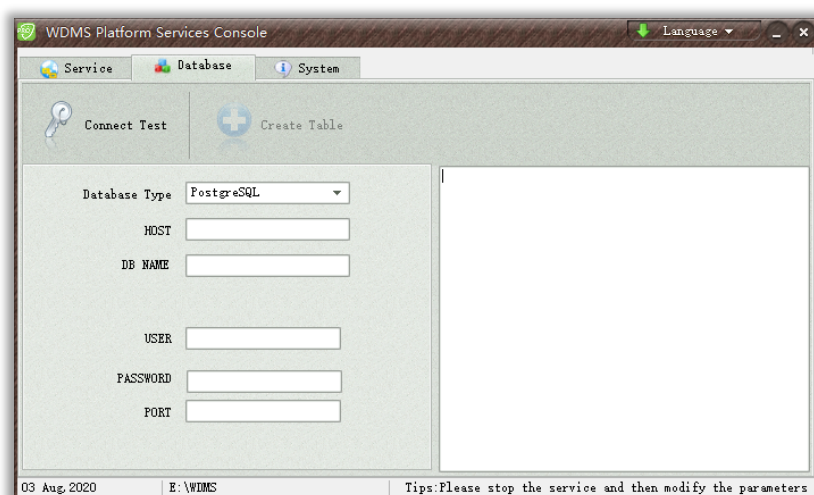


5.2 Database Configuration

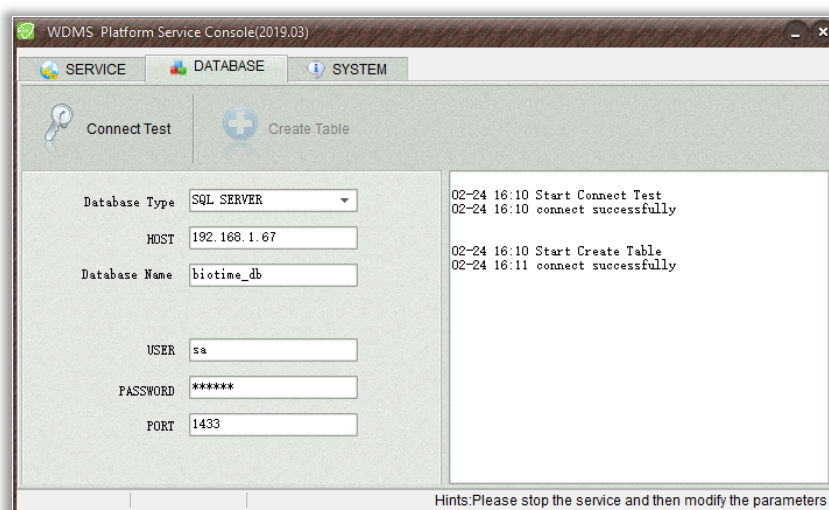
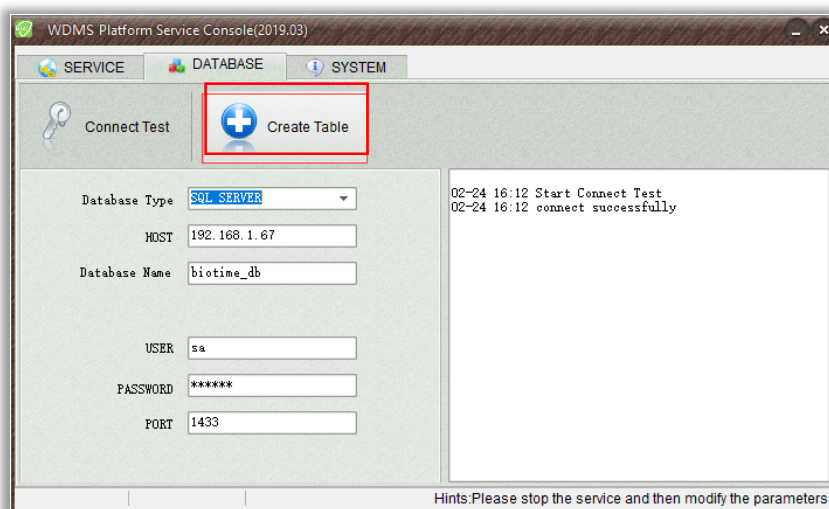
1. In the **Database** tab, the user will see the following image if the database was already configured during installation.



2. If the database was not configured during installation, the user needs to select the desired database and enter the correct parameters then click **Connect Test**. It will display "Connected Successfully" if the connection was made successfully.

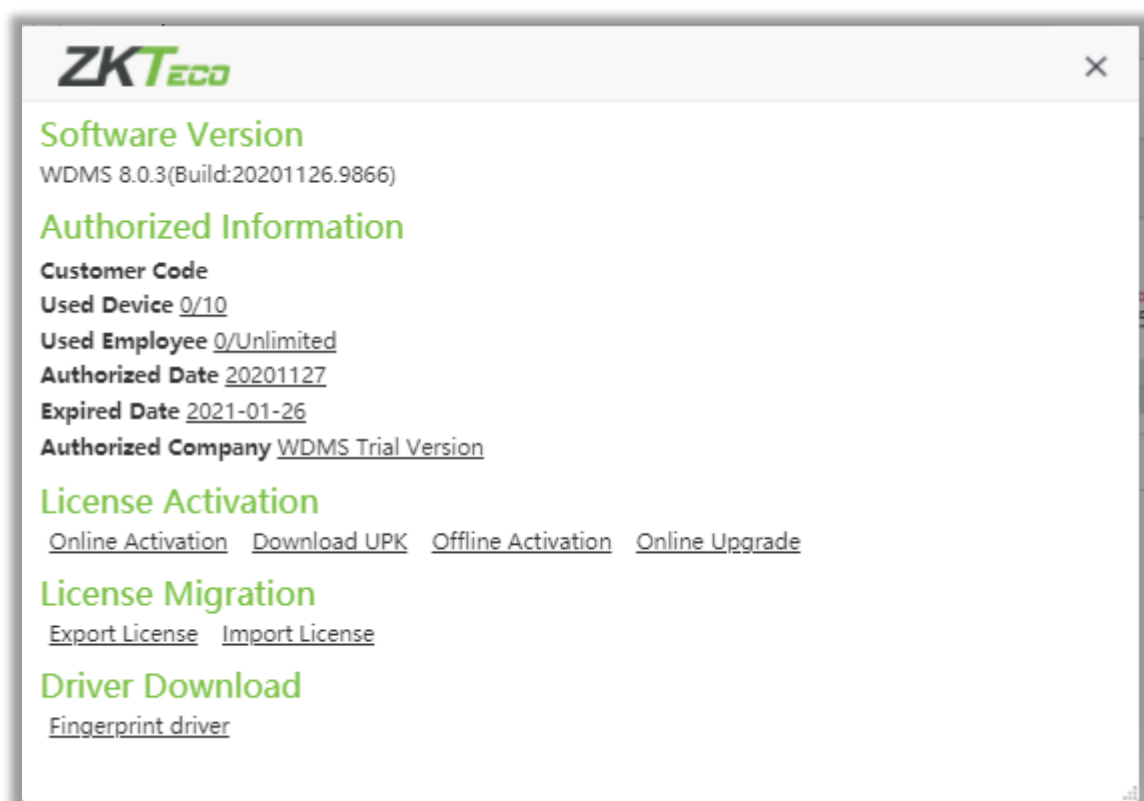


- Click **Create Table** and once it is successful, it will display “**Connected Successfully**”



5.3 License Information

The License Information can be obtained from the **About** option on the WDMS Home page as shown below:



www.zkteco.com

