

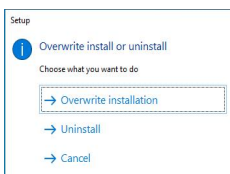
1. Precautions When Upgrading ZKBio CVSecurity

1. ZKBio Security V5000 3.0.0_R (except Video and VMS modules) can be upgraded to ZKBio CVSecurity.


2. ZKBio Security 3.2.0.0 cannot be upgraded directly to ZKBio CVSecurity.

Current Version	Upgrade Path	Upgrade Method
ZKBioSecurity 3.2.0.0_R	ZKBioSecurity V5000 4.1.R > ZKBio CVSecurity 6.0.0_R	1. Using ZKBioSecurity V5000 4.1.x_R migration data function to upgrade from 3200 to V5000 4.1.x_R;
ZKBioSecurity V5000 2.0.x_R		2. Then overwrite installation with ZKBio CVSecurity 5.3.0_R
ZKBioSecurity V5000 3.0.x_R	ZKBio CVSecurity 6.0.0_R	Using overwrite installation method with ZKBio CVSecurity 6.0.0_R
ZKBioSecurity V5000 4.0.x_R		
ZKBioSecurity V5000 4.1.x_R		
ZKBio CVSecurity 5.0.0_R		
ZKBio CVSecurity 5.1.1_R		
ZKBio CVSecurity 5.2.0_R		
ZKBio CVSecurity 5.3.0_R		
ZKBio CVSecurity 5.4.0_R		

Overwrite installation method :When installing with the latest version of ZKBio CVSecurity, click Overwrite Installation when prompted, and then the original version of data will be updated to the latest version



2.ZKBio CVSecurity V6.0.0 R Key Update

No.	Module	Function	Update content description	User Guide	
1	Personnel	BioPhoto	Newly added support for uploading BioPhoto, separated from User Photo	Biophoto.docx	
2			Supports batch import of Biophoto		
3			Supports viewing of Biophoto		
4	Parking	Added field for parking time	Real-time monitoring, reports, and API now support parking time field	/	
5	Access Control	Real-time monitoring supports live preview of doors	Supports preview before remote door control	Video View.docx	
6			Supports live preview of doors when clicking on the door icon in the map center		
7	Time&Attendance	Added support for more attendance report types	Added support for more types of attendance reports, a total of 19 are supported	/	
8	System	Language self-translation and import	1. Provide translation platform for users to translate languages by themselves 2. Support self-service import of translated language packages in the console	ZKBio CVSecurity Language Proofread Manual: 20220919.doc	
9		Supports Two-Factor Authorization login	2: Custom reports, support sending daily attendance reports*	2FA Login.docx	
10		Multi-server	Supports two-factor authentication login to enhance login security	Multi-Server.docx	
11	Global Message Notification	Optimized inter-module message linkage	System Management	Supports configuring global message linkage in system modules	 ZKBio CVSecurity V6.0.0
12			Access Control Module	Supports real-time sending of personal access records to the person who generated them (via SMS, Email, WhatsApp)	
13				Supports sending notification messages to designated personnel after linkage trigger (SMS, Email, WhatsApp, Line)	
14				Muster Point: when an emergency occurs and the Muster Point is activated, a notification of "Emergency Assembly" is sent to all employees in the department (via SMS, Email, WhatsApp)	
15				Muster Point: supports sending statistical reports on emergency assembly on a regular basis to designated personnel (via Email)	
16				Regularly sends daily or all access event reports to designated personnel (via Email)	
17				Sends messages to designated personnel when an access event occurs (via Email, SMS)	
18			Time&Attendance Module	Supports sending personal attendance records to the corresponding individuals (via SMS, Email, WhatsApp)	
19				Regularly sends attendance reports to designated personnel (via Email)	
20			Elevator Control	Supports sending notification messages to designated personnel after linkage trigger (SMS, Email, WhatsApp, Line)	
21				Supports sending personal access records to corresponding individuals (via SMS, Email, WhatsApp)	
22			Entrance Control	Supports sending notification messages to designated personnel after linkage trigger (via Email)	
23				Supports sending personal access records to corresponding individuals (via SMS, Email, WhatsApp)	
24			Locker Management	Supports sending notification messages to designated personnel after linkage trigger (via SMS, Email, WhatsApp, Line)	
25				Supports reminding patrol personnel before the start of video patrol tasks (via Email)	
26			Video Surveillance	Supports sending notification messages to designated personnel after linkage trigger (via SMS)	
27				Supports sending notification messages to designated personnel after linkage trigger for intelligent analysis (via SMS, Email, WhatsApp)	
28			Intrusion Alarm	Supports sending notification messages to designated personnel after alarm linkage	
29			Visitor	Supports sending messages to designated personnel after alarm linkage trigger (SMS, WhatsApp, Email, Line)	
30	Smart Video Surveillance	User Permission Management	Supports sending notification messages to designated personnel after linkage trigger for visitor booking, booking timeout, registration, check in, check out, late check out, watchlist, etc. (via SMS, Email, WhatsApp)	ZK_What's New For ZKBio CV Security 5.4.0_R_v2.0_20230428.pdf	
31			Newly added permission management for video preview, PTZ control, snapshot, playback, partial expansion, and voice intercom		
32			Newly added permission management for video playback, video download, snapshot, partial expansion		
33		Fine-grained management of main NVR functions and IPC camera functions is added			
34		Menu Adjustment	All page permissions are fine-grained to the third-level sub-function management (such as the add, refresh, and edit buttons in a page)		
35			Accompanied by menu page adjustment of ZK NVR main device to ensure consistency with ZK NVR configuration		
36		Device Management	Newly added support for connecting ZK 16/32-channel dual-disk standard NVR hardware		
37		Video Playback	Newly added support for smart retrieval with human and vehicle characteristics filter; the target video can be quickly retrieved and marked in different colors via ZKNVR		
38		Decode on the wall	Configurable linkage alarm to be displayed on the splicing wall window; once triggered, can be automatically displayed on the splicing wall, realizing window roaming (with ZK decoder)		
39		Intelligent Analytics	Newly added support for BiSense series intelligent analysis function linkage with alarm and access control bidirectional linkage		
40			Newly added support for linkage alarm decoding and display on wall configuration, camera selection and wall display time can be selected		
41		Statistics Analysis	Newly added support for object detection alarm; intelligent motion detection alarm with human and vehicle characteristics; region detection intelligent alarm with human and vehicle characteristics; line crossing detection intelligent alarm with human and vehicle characteristics; target counting intelligent alarm with human and vehicle characteristics		
42	Log	Supports switch control of CU request, as well as client request logs			
43	Add ONVIF Device	Third-party NVR is supported to connect to the platform for basic video management via Onvif protocol, which currently supports only preview	Only supporting onvif NVR for preview.		
44	C/S Client	The client supports preview, playback, electronic maps, alarms.	Contact Popy or Mac		

Module	Description	Notification Type	Result Verification
Access Control	Support personal access control records sent in real time to the individual who generated the record	SMS,Email,WhatsAPP	
	Support linkage trigger to send message notification to designated personnel	SMS,Email,WhatsAPP, Line	
	Muster Point: When an emergency occurs and Muster Point is activated, the linkage sends an "emergency assembly" notification to all employees in the department.	SMS,Email,WhatsAPP	
	Muster Point: Support sending statistical reports of emergency assembly to specified personnel periodically	Email	
	Periodically send reports to designated personnel for the current day or all access control events	Email	
	Send a message to the specified person when an access control event is generated	Email,SMS	
Time&Attendance	Support sending individual attendance records to the corresponding individuals	SMS,Email,WhatsAPP	
	Regularly send attendance reports to specified personnel	Email	
Elevator Control	Support sending message notification to specified person after linkage trigger	SMS,Email,WhatsAPP, Line	
Entrance Control	Support sending individual access records to the corresponding individuals	SMS,Email,WhatsAPP	
	Support sending message notification to specified person after linkage trigger	Email	
Locker Management	Supports sending personal storage & retrieval records to the corresponding individuals	SMS,Email,WhatsAPP	
	Support sending message notification to specified personnel after linkage trigger	SMS,Email,WhatsAPP, Line	
Video Surveillance	Support to remind the patrol personnel before the video patrol task starts	Email	
	Support sending message notification to specified personnel after linkage trigger	SMS,Email	
Intelligent Analytics	Support sending message notification to specified personnel after the linkage trigger of intelligent analysis	SMS,Email,WhatsAPP	
Intrusion Alarm	Support sending a message to the designated person after the alarm linkage trigger	SMS,Email,WhatsAPP, Line	
Visitor	Support sending messages to designated personnel after visitor appointment, appointment timeout, registration, check in, check out, late check out, watchlist and other visitor flow linkage	SMS,Email,WhatsAPP	