

User Manual

Air Quality Detector AQD-L100

Version: 1.0

Product Specifications

Display method: Common Screen display
Atmospheric pressure: 86Kpa to 106Kpa
Detection method for CO2: Infrared (NDIR)
Sampling time: 1.5 seconds
Product Size: 190*80*52mm
Detection temperature: -10°C to 50°C
Relative humidity: 20% to 85%
Storage temperature: -10°C to 60°C
Concentration unit for CO2: PPM
Power source: Lithium battery with 3000 mAh capacity;
5V DC power charging via micro USB port

Product Description

This product is an air quality monitor that detects Carbon dioxide (CO2), Temperature, and Humidity. It combines sensors for real-time monitoring of Carbon dioxide (CO2), temperature, and humidity on its display.

2

Considerations

Please read the instructions carefully before using this device.
Please let the device work short mins outdoors before use for most accurate results.
Please keep the manual handy for quick reference and troubleshooting.

Precautions

Avoid covering the air intake areas during use to avoid inaccurate measurements.
Avoid use of solvents to clean the product as residual fumes will skew air quality readings.
Avoid water or other liquids near the product to avoid electrical damage.
Do not allow unauthorized modification or repair of this product.

Features

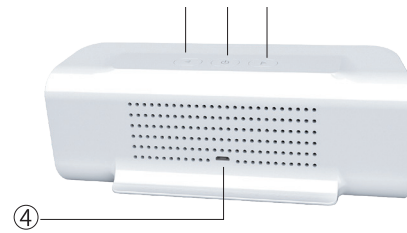
- Common Screen display
- Test variables: Carbon dioxide (CO2), temperature, humidity
- Large 3000mAh capacity Lithium battery
- 5V Micro USB charging
- Low battery warning

3

Instructions

1. Start Up

When you long-press the power button, the air quality monitor will boot up.



4

Product Key Function Description

1. Power button, long press to turn on/off, 2 times-click to enter time setting.
2. Right button, Single click to switch Celsius and Fahrenheit.
3. Left button, long-press to turn on/off Alarm sound. (when turn on alarm function, it would beep sound once CO2 value more than 1000PPM)
4. USB charging port.

Time setting
In the power-on state, short press 2 times power button to enter the Date and time mode;

click the left or right buttons to adjust the Years; then click the power button to switch to Months; click the left or right buttons to adjust the Months; then click the power button to switch to days; click the left or right buttons to adjust the days; then click the power button to switch to Hours; click the left or right buttons to adjust the hours; then click the power button to switch to minutes; click the left or right buttons to adjust the minutes; then click the power button to switch to seconds; click the left or right buttons to adjust the seconds. After adjustment well, click the power button to confirm and complete the time setting.

5

2. About Charging

When low battery icon is displayed, the device needs to be charged. Insert the included or another compatible micro USB charging cable into the device. Attach the other end to a USB DC charger (such as a smart phone charger) that outputs DC 5V at >=1000mA. Fully charge for at least 2-3 hours before use. Avoid charging with a USB computer port which only outputs 500mA.

3. Parameters

CO2 technical indicators

Measuring range: 400 to 5000PPM
Sensor for CO2: Infrared (NDIR)
Resolution: 1 PPM

Temperature and humidity technical indicators

Measuring range: -10 to 50°C
Measurement accuracy: ±1°C
Humidity range: 20% to 85% RH
Measurement accuracy: ±4% RH

Product List

Air Quality monitor	x 1
Micro USB charging cable	x 1
Product Manual	x 1

6

Ctra. Fuencarral 44. Edificio 1, Planta 2.

28108 Alcobendas, Madrid. Spain

Phone: +34 916 532 891

Mail: sales@zkteco.eu

www.zkteco.eu

Copyright © 2021 ZKTECO CO., LTD. All Rights Reserved.

