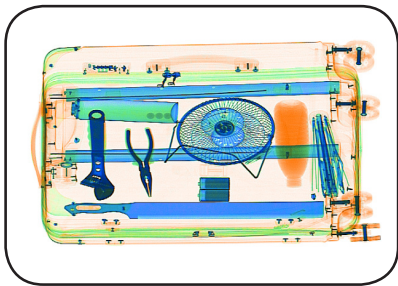


# Dual Energy X-ray Inspection System ZKX6550V



## Highlights

- Video surveillance system
- The black-and-white list function based on face recognition
- Widely usable for carry-on baggage

## Standard

- Fingerprint console board
- Dual monitor operation desk
- Video surveillance
- Face recognition

## Optional

- Auto-start function
- Bi-directional scanning
- Rat expelling function

## Introduction

ZKX6550V uses reliable high quality dual energy X-ray generator. With the superb image algorithm, ZKX6550V could offer clear scanning image, which allows operators to identify potential threat items visually.

ZKX6550V has innovative biometric identify function for operators, improving the security of system and preventing operator from forgetting password.

Advanced video surveillance technology can record each security process, and stored on the local hard disk, which allows operator and administrator review the surveillance video.

With advanced face recognition algorithm, ZKX6550V offers Black-list function could record face information of person who is suspicious. While a person is added to the Black-list, device would alarm to warn the operator when that individual goes through.

