

ZKTeco

ZL700

A Wireless Hotel Lock Compatible with ZKBioSecurity
With ZKBioHLMS Lock Management System(ZKBioHLMS)



96H Salt
Spray Test



Fire Resistant
Material (Optional)



Remote
Monitoring



Mobile
Credential



Wireless
Communication



ZL700 offers the convenience of a wireless hotel lock. This smart hotel lock adopts SAE 304 stainless steel design, enhancing its durability and corrosive resistant ability. The stylish ZL700 passed the 96H salt spray test, meet harsher corrosion environment requirements, like seaside environment. and this smart lock can endure corrosive environment and resist to extreme weather.

ZL700 is compatible with ZKBioSecurity Hotel Lock Management System (ZKBioHLMS), the lock supports remote control, status monitor and unlock record synchronization. Users can achieve access control and elevator control system by multi-tech cards. It is an ideal solution for smart hotels and resorts.

Features



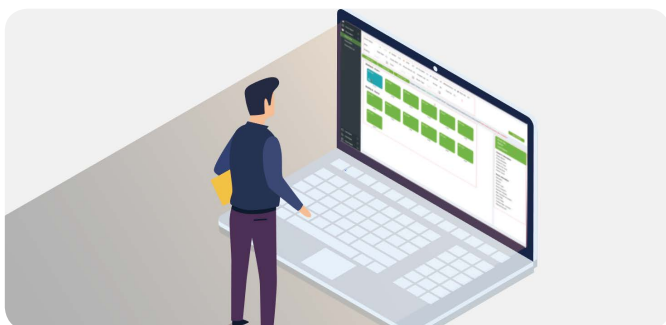
Flexible Scenarios

96H salt spray test for humid environment



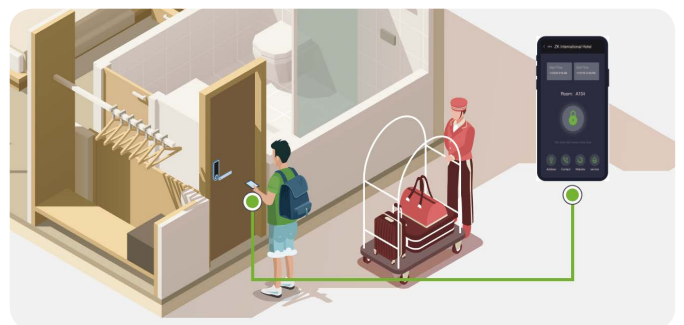
Free Egress

The lock can always be opened from the inside



Remote Monitoring

Monitor doors' status in real-time from anywhere



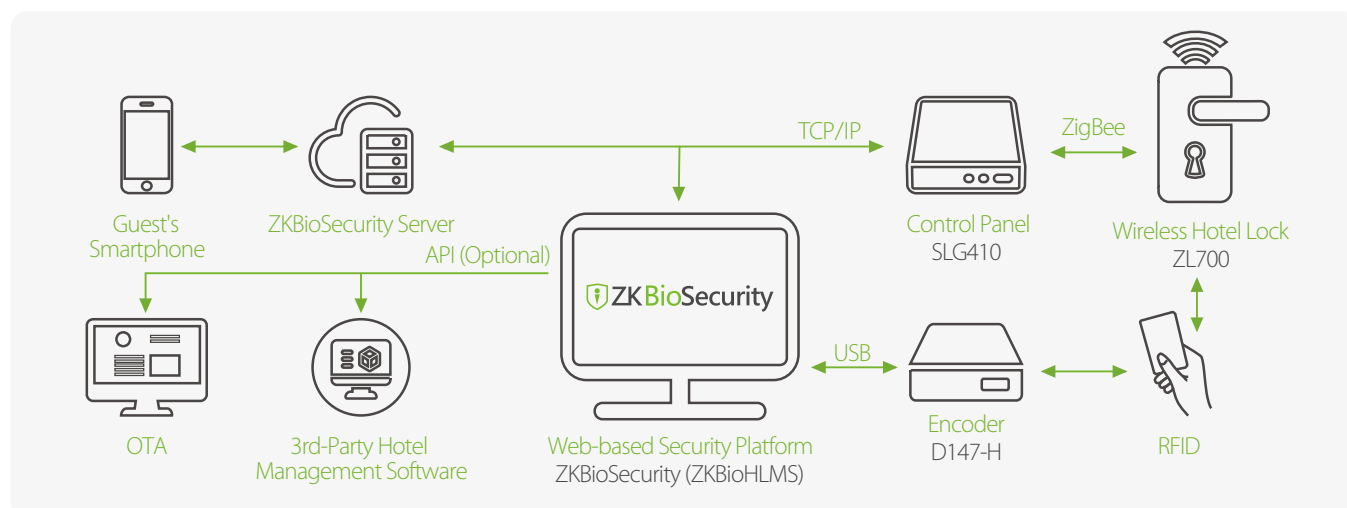
Mobile Credential

Unlock simply with a smartphone HTML5 (H5)

Specifications

Material	Housing (SAE 304 Stainless Steel)
Mortise	American Standard Mortise with 5 Latches
Card Reader	D147-H
Communication	ZigBee
Card Type	IC S50 / S70 Card
Emergency Mode	Support
Power Supply	4*AA alkaline battery (not included)
Battery Life	Up to 1 year
Dimension(s) (L*W*D)	Outdoor Unit: 289.6*77.9*23 (mm) Indoor Unit: 245.8*77.9*17.3 (mm)
Door Thickness	36mm to 55mm
Supported Software	ZKBioHLMS
Operating Temperature	-20°C to 55°C
Operating Humidity	5%RH to 95%RH
Certification(s)	CE, FCC

Configuration



Note: It illustrates a complete hotel lock management system of ZKBioHLMS; API is an optional customized server.

Dimensions (mm)

